

CD105 Antibody
Mouse Monoclonal Antibody (Mab)
Catalog # AD80042**Specification**

CD105 Antibody - Product info

Application	IHC
Primary Accession	P17813
Reactivity	Human
Host	Mouse
Clonality	Monoclonal
Isotype	IgG1
Calculated MW	70578

CD105 Antibody - Additional info

Gene ID	2022
Gene Name	ENG
Other Names	
Endoglin, CD105, ENG, END	

Dilution

IHC~~Ready-to-use

Storage

Maintain refrigerated at 2-8°C

Precautions**CD105 Antibody is for research use only and not for use in diagnostic or therapeutic procedures.****CD105 Antibody - Protein Information****Name** ENGSynonyms
Function**END**
Vascular endothelium glycoprotein that plays an important role in the regulation of angiogenesis (PubMed:[21737454](#), PubMed:[23300529](#)). Required for normal structure and integrity of adult vasculature (PubMed:[7894484](#)). Regulates the migration of vascular endothelial cells (PubMed:[17540773](#)). Required for normal extraembryonic angiogenesis and for embryonic heart development (By similarity). May regulate endothelial cell shape changes in response to blood flow, which drive vascular remodeling and

Cellular Location

Tissue Location

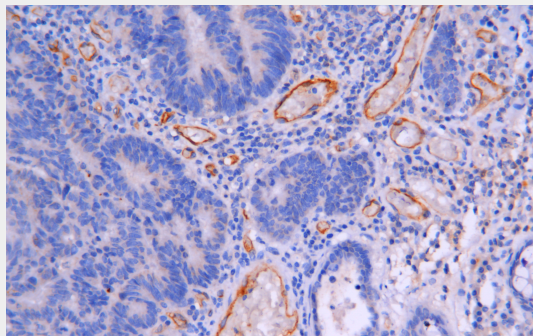
establishment of normal vascular morphology during angiogenesis (By similarity). May play a critical role in the binding of endothelial cells to integrins and/or other RGD receptors (PubMed:[1692830](#)). Acts as TGF-beta coreceptor and is involved in the TGF-beta/BMP signaling cascade that ultimately leads to the activation of SMAD transcription factors (PubMed:[8370410](#), PubMed:[21737454](#), PubMed:[22347366](#), PubMed:[23300529](#)). Required for GDF2/BMP9 signaling through SMAD1 in endothelial cells and modulates TGFB1 signaling through SMAD3 (PubMed:[21737454](#), PubMed:[22347366](#), PubMed:[23300529](#)).
Cell membrane; Single- pass type I membrane protein
Detected on umbilical vein endothelial cells (PubMed:[10625079](#)). Detected in placenta (at protein level) (PubMed:[1692830](#)).
Detected on endothelial cells (PubMed:[1692830](#))

CD105 Antibody - Protocols

Provided below are standard protocols that you may find useful for product applications.

- [Western Blot](#)
- [Blocking Peptides](#)
- [Dot Blot](#)
- [Immunohistochemistry](#)
- [Immunofluorescence](#)
- [Immunoprecipitation](#)
- [Flow Cytometry](#)
- [Cell Culture](#)

CD105 Antibody - Images



Immunohistochemical analysis of paraffin-embedded colorectal carcinoma; tissue using AD80042 performed on the Abcarta® FAIP-30 Fully automated IHC platform. Tissue was fixed with formaldehyde at room temperature, antigen retrieval was by heat mediation with a Citrate buffer (pH6.0). Samples were incubated with primary antibody (Ready-to-use) for 15 min at room

temperature. AmpSee™ Detection Systems□Abcepta:AR005□ was used as the secondary antibody.